

MODEL NUMBERS:

N=Non Monitoring

M=Monitoring(with gauge)

VBU-MXXXXXXXXXX

U=English (USA Colors)

E=English (ISO Colors)

F=French (ISO Color)

S=Spanish(ISO Colors)

Replace XX with the following to indicate the size(s) of the Valve required.

1/2" =05

3/4" =07

1" =10

1 - 1/4" =12

1 - 1/2" =15

2" =20

2 - 1/2" =25

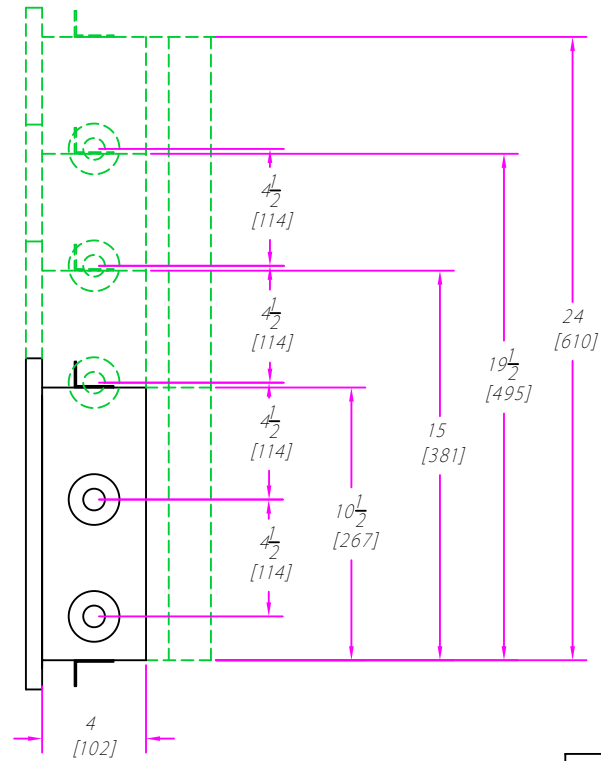
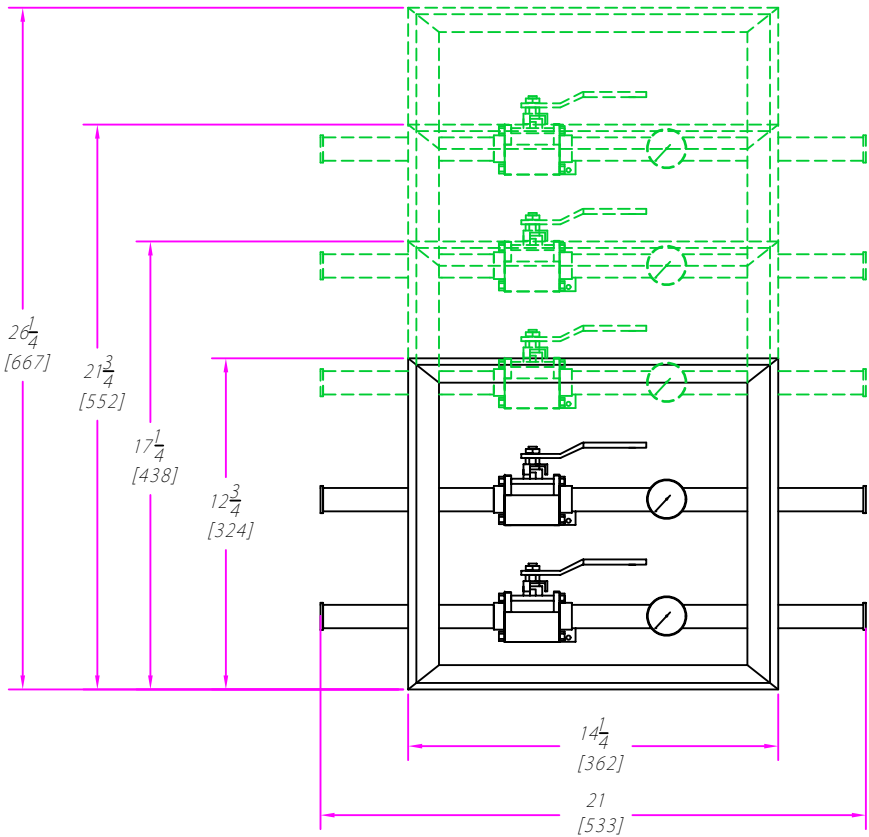
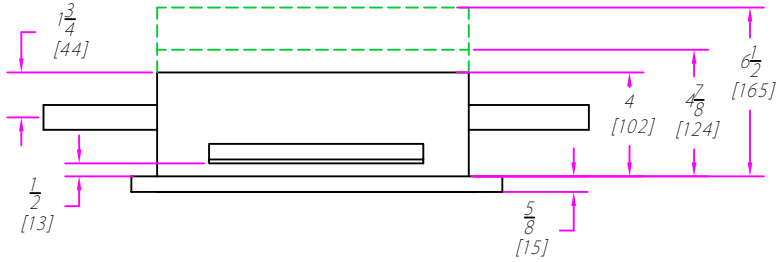
NOTE:

1.The 2" full port valve and larger valves require a 6-1/2" deep box.

3.1-1/2" valves and larger will have an empty space above the valve.

EXAMPLE: A box with a 1/2", 3/4" and 1-1/2" valve will require a 4 hole box not a 3 hole box.

MULTIPLE ZONE VALVE BOX ASSEMBLY



MODEL NUMBERS:

N=Non Monitoring

M=Monitoring(with gauge)

VBU-MXXXXXXXXXX

U=English (USA Colors)

E=English (ISO Colors)

F=French (ISO Color)

S=Spanish(ISO Colors)

Replace XX with the following to indicate the size(s) of the Valve required.

1/2" =05

3/4" =07

1" =10

1 - 1/4" =12

1 - 1/2" =15

2" =20

2 - 1/2" =25

NOTE:

1.The 2" full port valve and larger valves require a 6 - 1/2" deep box.

3.1 - 1/2" valves and larger will have an empty space above the valve.

EXAMPLE: A box with a 1/2", 3/4" and 1 - 1/2" valve will require a 4 hole box not a 3 hole box.