

# specifications

The Dental gas outlet shall be an Amico Alert-1 series.

Outlets shall be manufactured with a 6-1/2" [165 mm] length type "K" 1/2" [12.7 mm] outside diameter (3/8" normal) size copper inlet pipe stub, which is silver brazed to the outlet body. Body shall be 1-5/16" [33 mm] diameter one piece brass construction. For positive pressure gas services, the outlet shall be equipped with a primary and secondary check valve and the secondary check valve shall be rated at a maximum of 200 psi [1379 kPa] in the event the primary check valve is removed for maintenance. Outlet bodies shall be gas specific by indexing each gas service to a gas specific dual pin indexing arrangement on the respective identification module.

A large color coded front plate shall be used for ease of gas identification and aesthetic appeal.

A one piece aluminum sub plate shall frame the outlet. With the backbox mounted the outlet shall adjust from 3/8" [10 mm] to 1" [25 mm] variation in wall thickness.

The latch valve assembly shall be Ohmeda Diamond™ (Ohio Medical) Quick Disconnect compatible and accept only corresponding Ohmeda type gas specific adapters.

Outlets are UL Listed and CSA approved.

Amico products comply with NFPA-99.



# features

- ▶ Flow rate exceeds the requirements of NFPA and CSA
- ▶ Accepts Ohmeda Diamond™ gas specific adapters
- ▶ 100 % Hydrostatic testing of each outlet and cleaned for medical gas service
- ▶ Indexed to eliminate interchangeability of gas services
- ▶ Up to 25 mm [1"] wall thickness adjustment
- ▶ 360° swivel inlet pipe for easy installation
- ▶ Universal rough-in assembly to accept Quick Disconnects or DISS front adapters (Can be interchanged at any time)

project

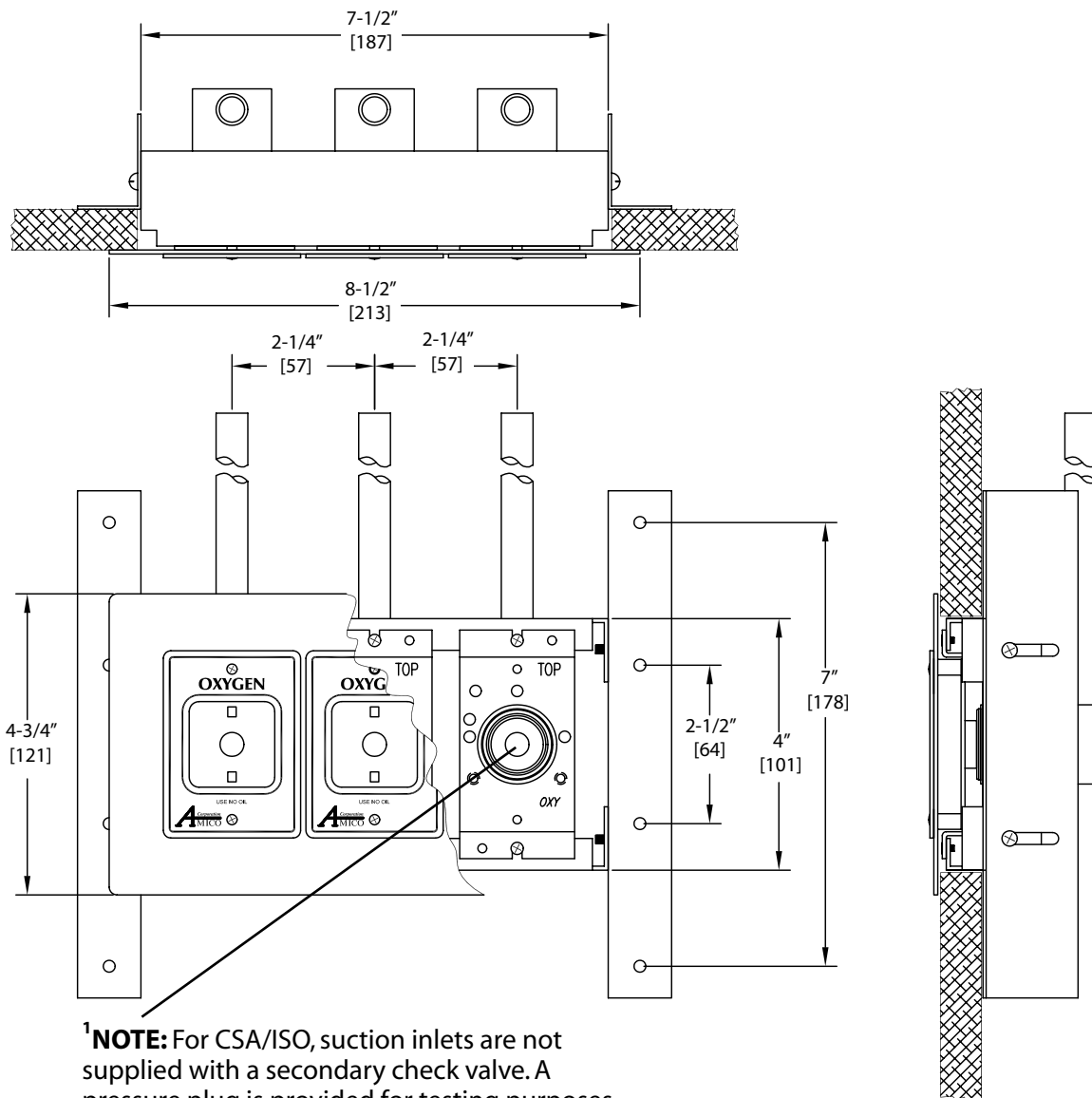
---



---



---



<sup>1</sup>**NOTE:** For CSA/ISO, suction inlets are not supplied with a secondary check valve. A pressure plug is provided for testing purposes, rated at 150 psi [1,034 kPa].

## model numbers

### O-QDDENT-U-XXX

U = English (USA Colors) Oxy, N2O and Vac only  
E = English (CSA/ISO)

The XXX defines the Gas:

Oxygen = O  
MedVac = V  
Nitrous Oxide = 2

Example: English USA = **O-QDDENT-U-O2V**

represented by: