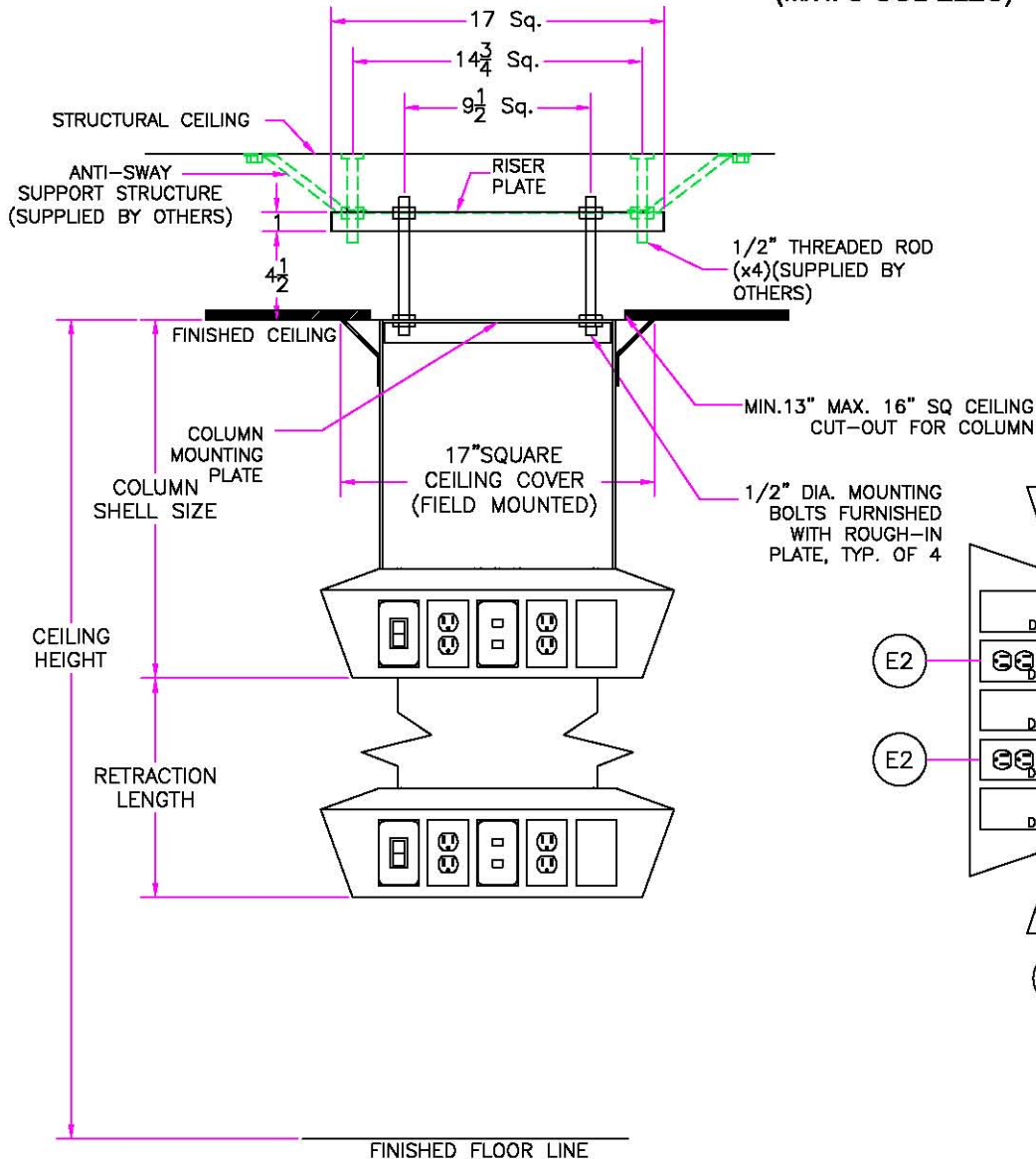


# MOTORIZED RETRACTABLE CEILING COLUMN

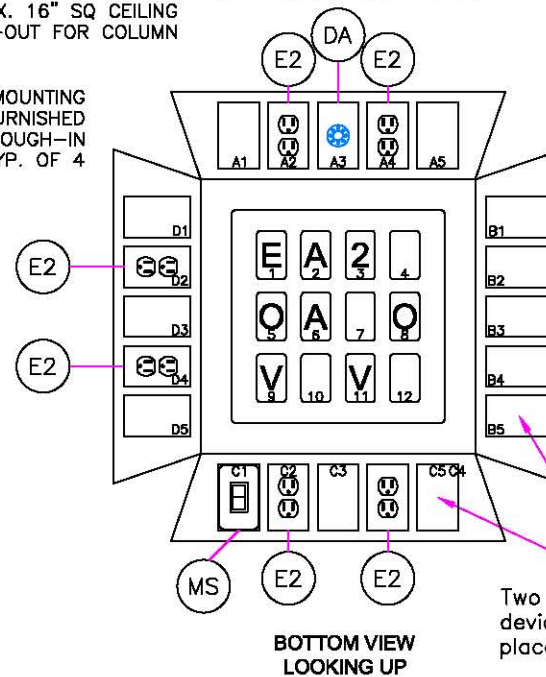
(M/N: C-COL-ELEC)

TYPE:  
QUANTITY:

| SYSTEM DETAILS |      |                          |
|----------------|------|--------------------------|
| SYMBOL         | QTY. | DESCRIPTION              |
| CC             | 1    | CEILING COLUMN           |
| E2             | 6    | RECEPTACLE - DUPLEX RED  |
| DA             | 1    | PROVISION - DATA         |
| MS             | 1    | MOTORIZED UP/DOWN SWITCH |
| 2              | 1    | GAS, NITROUS OXIDE       |
| E              | 1    | GAS, EVAC                |
| O              | 2    | GAS, OXYGEN              |
| A              | 2    | GAS, MED AIR             |
| V              | 2    | GAS, VACUUM              |



ACCESS PANEL ON THIS SIDE



AMICO CORPORATION  
01/01/11  
FOR PRESENTATION PURPOSES ONLY

Two electrical/communication devices or gases cannot be placed together at any corner.

IMPORTANT: PLEASE VERIFY THAT THE ABOVE INFORMATION IS CORRECT, AND PROVIDE THE REMAINING DETAILS.

APPROVAL - PRINT AND SIGNATURE

DATE

PHONE NO.

**AMICO Corporation**  
85 Fulton Way  
Richmond Hill, Ontario  
L4B 2N4, CANADA  
Toll-Free: 1-877-482-8426 (T)  
1-866-440-4886 (F)  
Tel: (905) 784-0800  
Fax: (905) 784-0882  
www.amico.com

|          |  |
|----------|--|
| HOSPITAL |  |
| LOCATION |  |
| QTY.     |  |

|                             |                        |                        |
|-----------------------------|------------------------|------------------------|
| A. NURSE CALL MFGR: _____   | MODEL NO.: _____       | DRWG. NO. PRICEBOOK-62 |
| B. MEDICAL GAS MFGR.: _____ | TYPE CONNECTION: _____ | DRAWN BY: _____        |
| C. FINISH: _____            | CEILING HEIGHT: _____  | CHECKED BY: _____      |
|                             |                        | REV. NO.: 00           |
|                             |                        | DATE: _____            |