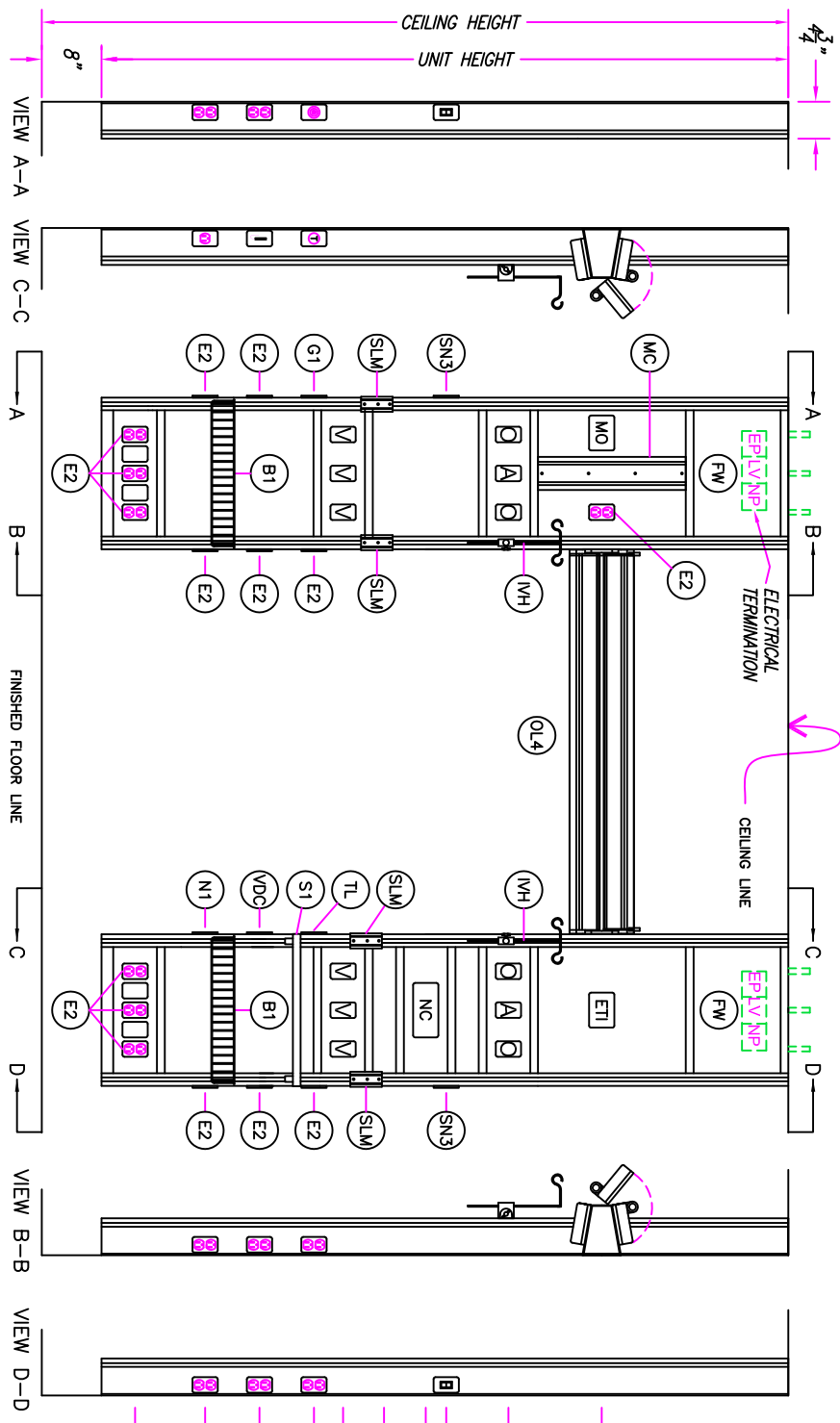
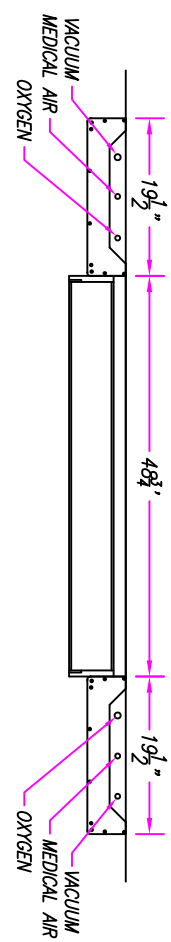


REGAL SERIES SURFACE MOUNTED 19" FLATWALL

FULL LENGTH H-CONFIGURATION
(M/N: FW19FL-DS-GEN-P)

DRAWING # 16



SYSTEM DETAILS		
SYMBOL	QTY.	DESCRIPTION
FW	2	FLATWALL, 19" WIDTH
E2	15	RECEPTACLE - DUPLEX RED
N1	1	RECEPTACLE - SIMPLEX IVORY
G1	1	GROUNDING JACK
NC	1	PROVISION - NURSE CALL
MO	1	PROVISION - MONITOR
TL	1	PROVISION - TELEPHONE
ETI	1	PROVISION - ELAPSED TIMER
SN3	2	SWITCH, 3 POSITION L.V.
OL4	1	4' OVERBED LIGHT
LVC	1	LOW VOLTAGE CONTROLLER
VDC	1	VOICE DATA CONNECTION
SLM	4	VACUUM SLIDE, ON TRACK
IVH	2	IV HOOK, ON TRACK
B1	2	19"x5"x3" BASKET, ON TRACK
S1	1	20"x12" SHELF, ON TRACK
MC	1	MONITOR CHANNEL, MOUNTED
O	4	GAS, OXYGEN
A	2	GAS, MED AIR
V	6	GAS, VACUUM

IMPORTANT: PLEASE VERIFY THAT THE ABOVE INFORMATION IS CORRECT, AND PROVIDE THE REMAINING DETAILS.

APPROVAL - PRINT AND SIGNATURE _____

DATE _____ PHONE NO. _____

A *Corporation*
85 Fulton Hwy,
Rehoboth Beach, Ontario
L4B 2N4, CANADA
Tel: (905) 877-462-6428(F)
Toll-Free: 1-877-462-6428(F)
Fax: (905) 764-0860
www.gmico.com

HOSPITAL _____

LOCATION _____

QTY: _____ TYPE _____ UNITS AS SHOWN / _____ TYPE _____ UNITS OPPOSITE

A. NURSE CALL MFGR.: _____ MODEL NO.: _____

B. MEDICAL GAS MFGR.: _____ TYPE CONNECTION: _____

C. FINISH: _____ CEILING HEIGHT: _____

DRWG. NO. _____ PRICEBOOK-16

DRAWN BY/CS _____ CHECKED BY/CS _____

REV. NO.: _____ DATE: _____